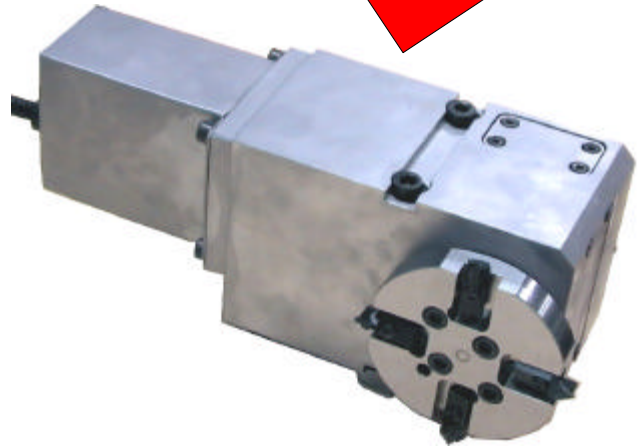


## 4-POSITION TOOL-HOLDER TURRET

An accessory used on NC multispindle lathes or mechanical lathes fitted with radial and axial slides managed by computerised numeric control.

4 different types of tool can be used on the tool-holder to produce different types of machining; if necessary, 4 identical tools can be fitted and the tool-holder made to rotate the use of these to avoid excessive wear.



Size	Ø A		B	C	D	E	F
Gr.3	Standard 96	Max 98	150	270	100	82	103

