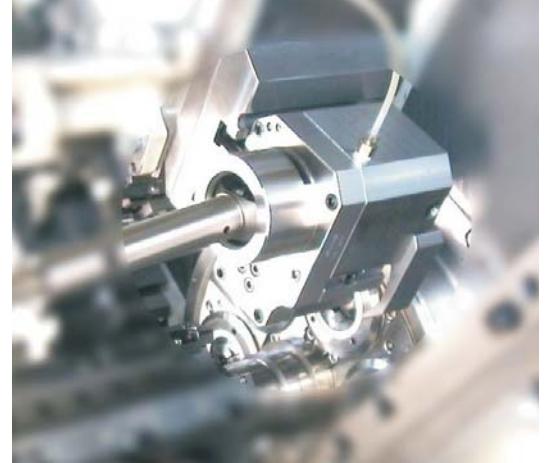


## **POLYGONS MILLING ATTACHMENT**

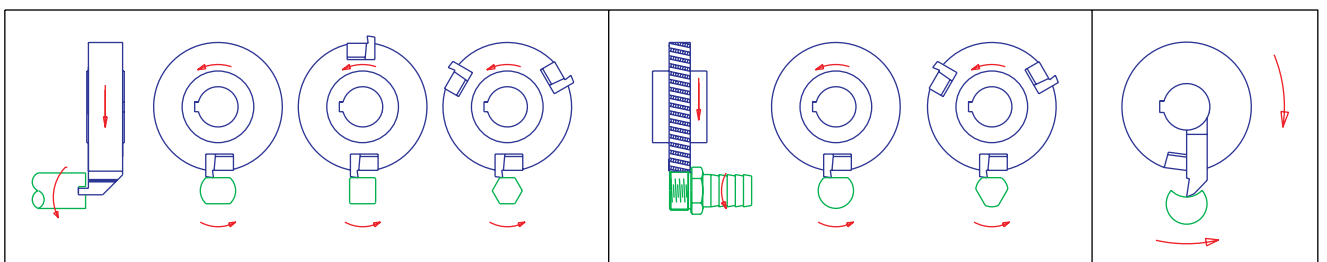
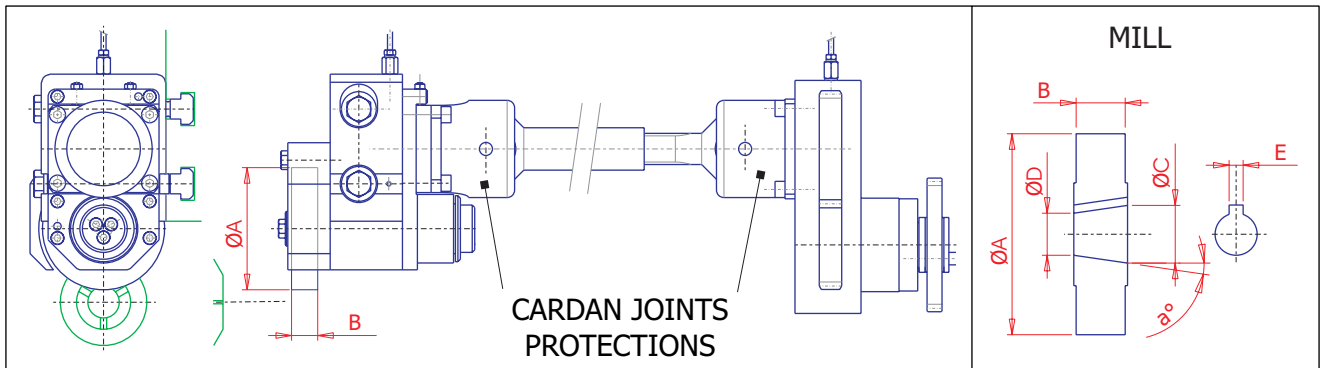
Attachment for multispindle automatics used for the milling of polygons and threads, and for round slots on brass spheres.

This Attachment is normally used on materials like aluminium and brass.

The polygon milling attachment has also a patented protection system of the cardan joint to avoid the throwing out of joint parts after the breaking, of this, due to overloads or accident.

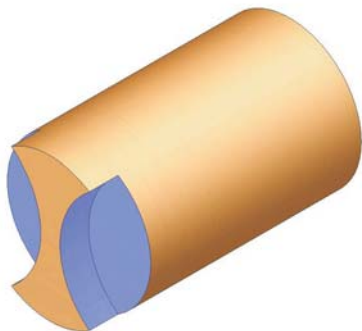
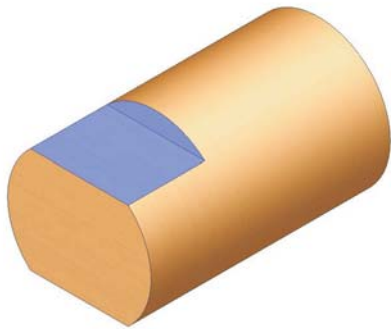
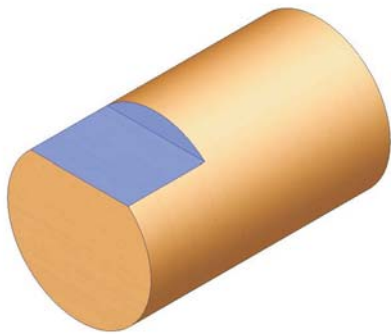


Size	Ø A	B	Ø C	Ø D	E	a°
Gr.0	70	15	15	11.5	4	8°16'33"
Gr.1	86	21	24.69	18	6	8°16'33"
Gr.3	98	21	26	20	6	8°32'

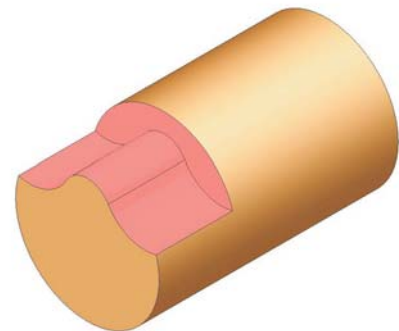
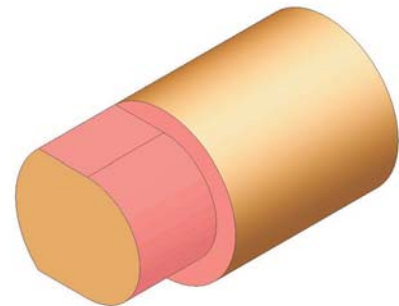
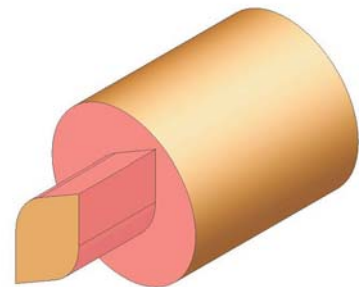


### **PHASE CHANGER DEVICE AND POLYGON ATTACHMENT**

The coupling of a polygon thread miller attachment with a phase changer device allows to execute on rotating pieces which are working on the main spindle, beside standard polygon thread millings, a further range of "supplementary" out-line machinings able to work on pieces different kinds of shapes, In addition the polygon thread miller attachment is equipped with a patented protection system of cardan joints able to prevent parts of the cardan joint flying out in the event of a damage as a result of overcharge or accident.



**STANDARD MACHININGS**



**"SUPPLEMENTARY" MACHININGS  
WITH PHASE CHANGER DEVICE**